



# THE HANGING GARDENS OF BABYLON

Technical File Legendary Artistic Visions

**WINDOWS  
TO INFINITY**

By Expotour Itinerant

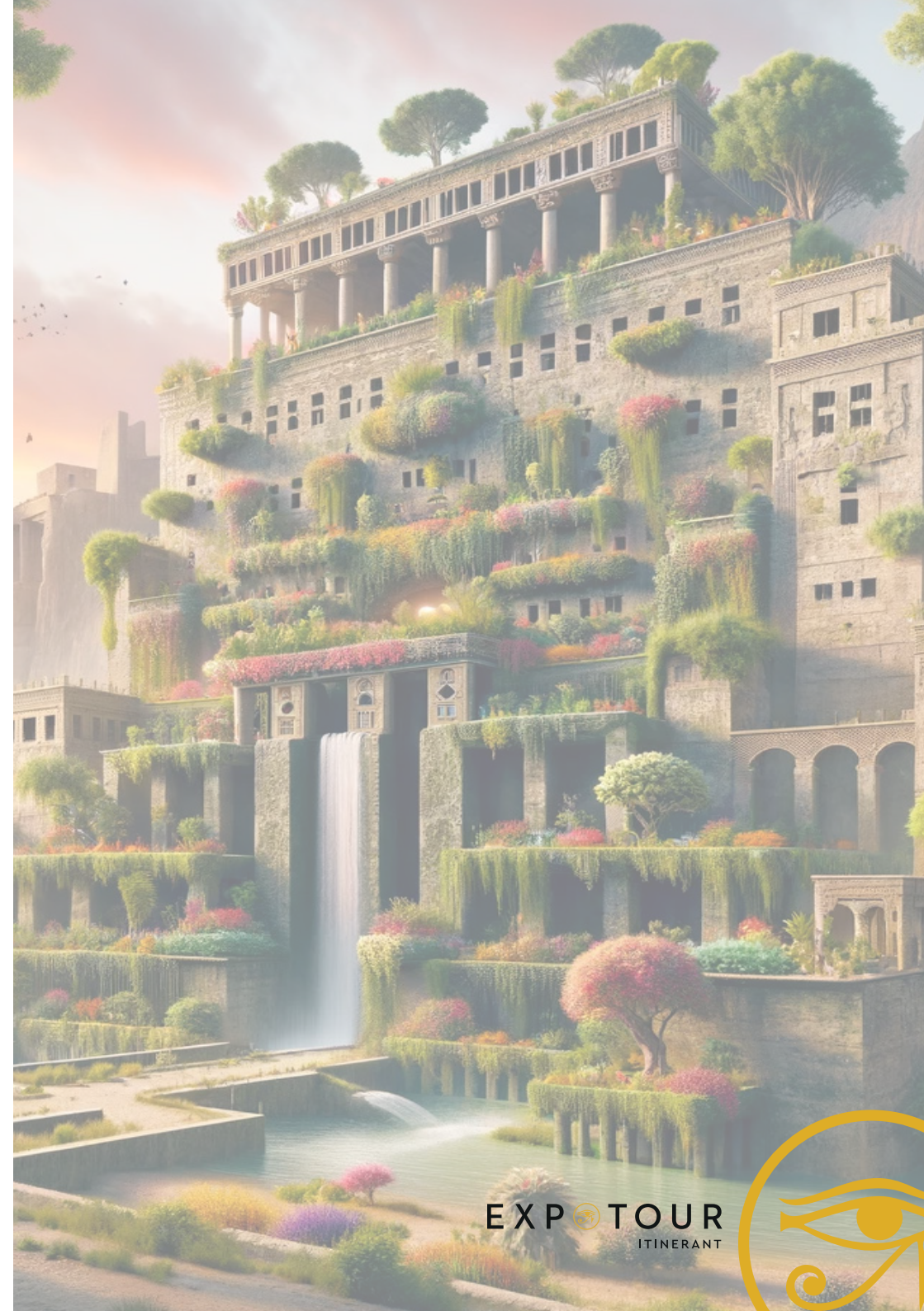


## What will the visitor see?

Each of these seven pieces is an individual work of art, a detailed journey into each of the wonders of the ancient world. Though smaller than the Monumental Visions, these artistic representations are full of visual richness and spectacularly immersive perspectives. Here, visitors lose themselves in an infinity of details: every column, every relief, and every scene is created to be observed with calm contemplation.

There are no moving light effects: the lighting is fixed, allowing the artistic splendor to speak for itself. Each piece has its own general audioguide covering the entire collection. In addition, a narration by the author, an art critique, and a video encompassing the whole set are included.

In each of these seven visions, the visitor will find an explosion of art and storytelling that invites them to contemplate the majesty of the ancient world from a unique perspective. Each wonder, presented individually, is a window into history and human creativity, allowing each viewer to discover and appreciate the artistic details that make these works truly special.





# OWS FINITY

## Author's Opinion

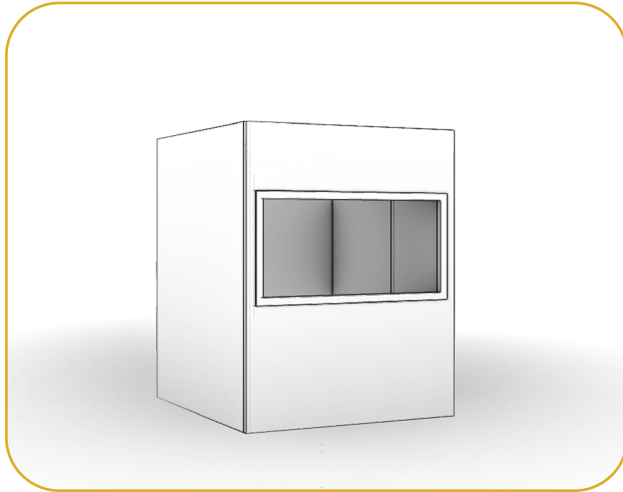
This series allowed me to immerse myself in the most epic myths and legends of humanity. The Seven Wonders of the Ancient World offered me a unique opportunity to explore the past and add my own personal touch. Each of these Visions combines history and creativity: they connect the viewer with the great achievements of human ingenuity.

**In Babylon, the Hanging Gardens** were not only an oasis of life in the desert but a tribute to the power of nature that could be shaped by human hands. Here, the plants climbed toward the heavens, as if they wanted to reach Ishtar, the goddess of love and war.

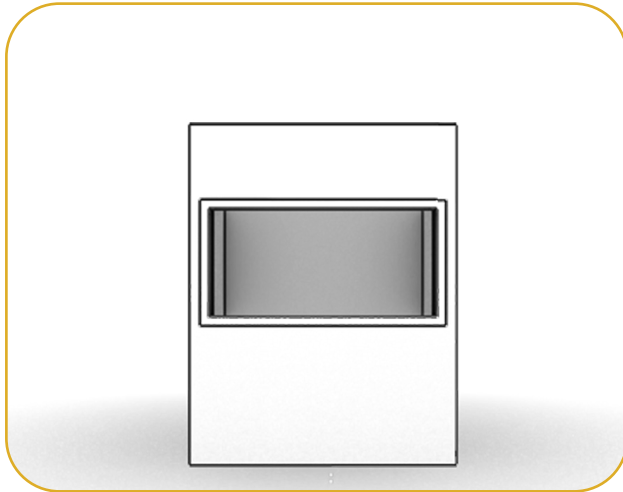


Edition **The Experience**:

Large modules designed exclusively for spacious exhibition areas.



The Experience | Complete module



The Experience | Complete module

### Technical Specifications

Module dimensions	2,20x2,40x2,57 m
Indivisible set	7 modules
Total height with bases	3,10 m
Total surface area	2,20x2,40 m
Total weight	200 kg
Weight per m <sup>2</sup>	50 kg
Electrical power	1 Kw
Automation	No

DMX LED lights	Included
Amplified audio	No
Screen	1 for the set
Graphics	1 ud
Front sign	Included
QR code plate	Included
Smoke extraction	No
Water and drainage	No

### Technical Accompaniment

Audio guide	Included
Video guide	Included
Music	Included
Video	Included
QR codes	Included
Travel guide	Included

### Artistic Accompaniment

Characters	No
Narrative	Collective
Final messages	No
Author's opinion	Included
Critical opinion	Included

### Suitable for:

Children	Yes
Adolescents	Yes
Young adults	Yes

Middle age	Yes
Seniors	Yes

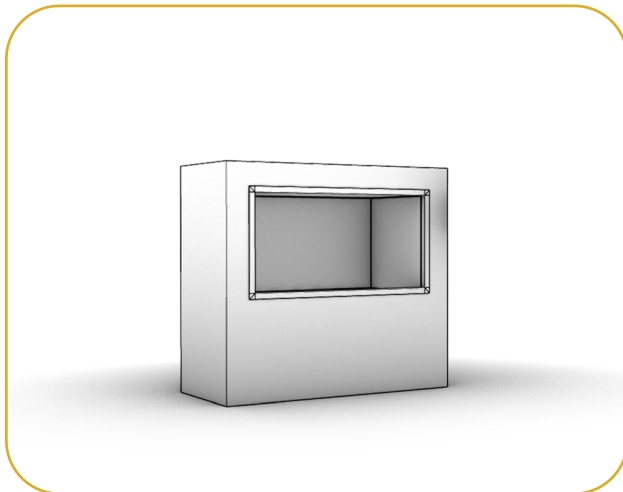


## Edition **The Essence**:

A compact module made up of reduced-size containers and foldable structures that can adapt to any kind of room with doors measuring 1.20x2.10 m.



The Essence | Basic module



The Essence | Complete module

## Technical Specifications

Module dimensions	2,60x1,20x2 m
Indivisible set	7 modules
Total height with bases	2,40 m
Total surface area	2,60x2,40 m
Total weight	200 kg
Weight per m <sup>2</sup>	50 kg
Electrical power	1 Kw
Automation	No

DMX LED lights	Included
Amplified audio	No
Screen	1 for the set
Graphics	1 ud
Front sign	Included
QR code plate	Included
Smoke extraction	No
Water and drainage	No

## Technical Accompaniment

Audio guide	Included
Video guide	Included
Music	Included
Video	Included
QR codes	Included
Travel guide	Included

## Artistic Accompaniment

Characters	No
Narrative	Collective
Final messages	No
Author's opinion	Included
Critical opinion	Included

## Suitable for:

Children	Yes
Adolescents	Yes
Young adults	Yes

Middle age	Yes
Seniors	Yes



# WINDOWS TO INFINITY

[www.expotouritinerant.com](http://www.expotouritinerant.com)  
[info@expotouritinerant.com](mailto:info@expotouritinerant.com)